



CLOVER CHRONICLES

March 2023

Isabella County

Inside this issue:

<i>Club Corner</i>	2
<i>Small Animal News</i>	3
<i>Fair Camping News</i>	3
<i>Scholarship Opportunities</i>	4
<i>BEElievers 4-H Club</i>	5
<i>Statewide Calendar</i>	6
<i>Statewide News</i>	7
<i>Royal Ambassador Program</i>	8-9
<i>Adult Volunteers Needed</i>	10
<i>PEP Program</i>	11
<i>Leader Dog</i>	12
<i>4-H Calendar</i>	13

Dairy Feeder Weigh-In

Saturday, March 18, 2023

7:30 a.m. - 11:30 a.m.

Isabella County Fairgrounds



Animals cannot weigh over 250 lbs. and must be:

- One of the following breeds: Ayrshire, Brown Swiss, Guernsey, Holstein, or Jersey
- Castrated & Dehorned

Each member can either:

- Weigh in a maximum of two feeders or,
- Within immediate families of more than one exhibitor: each member may weigh in one feeder, and one "family alternate" can be weighed in for the family. Only one feeder per exhibitor can be brought to fair when a family alternate has been weighed in.

It's required that by Fair, every feeder must have a RFID tag (radio frequency identification) in their ear. If you have any questions, contact Superintendent Mike Lattimer at (989) 513-7839.

Proud Equestrian Program (PEP) Open House

Tuesday, March 14

6 p.m.

Isabella County Building, Room 320

The 4-H Proud Equestrian Program (PEP) is a therapeutic horseback riding program that is offered through MSU Extension for individuals with any form of a disability (ex. emotional, cognitive, physical, etc.) With the help of trained and caring volunteers, riders can improve balance, coordination, posture and muscle tone. Horseback riding has been shown to increase self-esteem, self-confidence, discipline and social growth. Most of all, horseback riding is fun!

Our 2023 riding dates are June 13, June 20, June 27, July 11, July 18 & July 29 starting at 6 p.m. in Mt. Pleasant.

This Open House is for families and potential participants who are interested in joining the program. This time is dedicated for introductions and questions on how to get involved. If you or someone you know would be interested in riding/participating in our therapeutic riding program, contact Kristi at the Extension office at (989) 317-4079.



Protected Under
18 U.S.C. 707

CLUB CORNER

Aim High - Meeting was at the Commission on Aging. Members are working on their potential fair project lists as well as learning about upcoming opportunities and events, including the MSU rabbit show for those needing a rabbit for fair.

Country Neighbors - We welcomed several new members at our February meeting. Angie Caldwell stopped by to share info on an upcoming event. We also had a yarn spinning demonstration.

Evergreen - We hosted a spaghetti supper in February. We want to thank everyone that came and supported this effort. The proceeds from the dinner are used for educational opportunities for our members as well as supporting activities at the Isabella County Youth and Farm Fair.

Lucky Clover - We met on Sunday February 18 at 1pm. We had a pizza party and talked about making signs for our animal exhibits. We will be decorating these at our next meeting. Also talked about our horse show fundraiser in June.

Pony Creek - Had our February meeting on the 14th. We welcomed 3 new members. We brought donations to give to the child advocate in Isabella County. We decided to have an appreciation banquet and invite people that have helped our youth at our July meeting. Went through the newsletter and save the dates.

Broiler Chick Orders

Time to order your broiler chicks! Cost per bird will be \$3.74 if we order 25-49, \$2.87 if we order 50-74, or \$2.74 each for 75-99.

Orders need to be placed at the Extension office by April 26.

Interested in Dogs?

Canine Clovers 4-H Club is accepting new members. You do not need to own a dog to join the club, you can borrow a dog from someone.

Contact Mary Anne Tompkins for more information at (989) 948-0535.

Fair Superintendents Needed

We are looking for fair superintendents in the following areas:

- Exploring Your Heritage
- Personal Growth/Leadership

Duties include:

- Help with the Still Exhibit Building set-up Thursday evening before entry day
- Work your area in on fair entry day – helping judges, setting up projects for display
- Help in the Still Exhibit Building when the projects are released – last Saturday evening of fair

Please contact Kristi (schrei61@msu.edu) and Nonie (grossn@msu.edu) if you are interested in helping or know of anyone who would be.

Service Opportunity/Help Needed

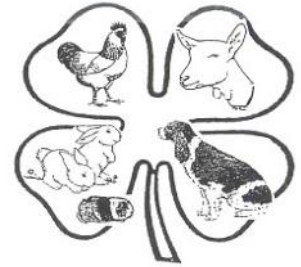
We are looking for volunteers to help run concessions in the fairground's food stand at an event being held on June 17. There will be other events that need volunteers as well. If you, your family, your club are interested, please communicate with Angie Coldwell at angella.coldwell@gmail.com. Thank you!

4-H Summer (overnight) Camp

Isabella County wants to run their traditional overnight 4-H Camp. We cannot do so without 4-H Gold Volunteers stepping up to help. We have to maintain a 1-8 adult to youth ratio. If this camp is going to take place, we need a commitment now for gold volunteers to commit to three days and two nights. July 10, 11 and 12. We also need a nurse. If this camp is to continue, we need help.

Small Animal News

- If you're a rabbit member and still looking for your fair project, the State Rabbit Convention is a good resource. It's held March 3 - 5 at the MSU Pavilion in East Lansing. It would be great place to find rabbits for fair. The earlier you go, the better chance of finding good options. <https://msrba.net/show-schedule/>
- Goats that will be entered in the small animal auction at the fair MUST have a scrapie tag BEFORE weigh-in. It is a State mandate, and if your auction goat does not have a scrapie tag, you will not be allowed to sell. ALL goats must have some identification -- either the scrapie tag or a tattoo for those not in the auction. Goat weigh-in (for wethers only) is May 13 from 10 a.m. - 12 p.m. in the small animal barn at the fairgrounds.
- If you do not already have your small animal purchase arranged, you should do so now. For example, there are only a couple of rabbit shows before the May 1 deadline and if you haven't placed an order or made contact with someone, it may be too late to get the breed you would like to have. If you wait until April 15 or later, it will be very difficult to have your animal(s) by May.
- Reminder, if you live outside of Isabella County and plan to sell in the small animal auction, you will need approval from the Small Animal Association. Plan to attend their next meeting on Thursday, March 15 at 7:00 p.m. at First Church of Christ in Mt. Pleasant. If you have already met with the Small Animal Association to sell in the auction and were approved, you do not have to do it again.



2023 4-H Shooting Sports Events



Dates:

April 15	Spring Kick Off (10 a.m. - 1 p.m.)
April 29	Qualifying Shoot (Registration 8:30 – 9:30 AM, Safety meeting 9:30 AM, Shooting begins 10:00 AM)
May 6	Qualifying Shoot (Registration: 8:30 – 9:30 AM, Safety meeting: 9:30 AM, Shooting begins: 10:00 AM)
June 3	Qualifying Shoot (Registration: 8:30 – 9:30 AM, Safety meeting: 9:30 AM, Shooting begins: 10:00 AM)
June 17	Qualifying Shoot (Registration: 8:30 – 9:30 AM, Safety meeting: 9:30 AM, Shooting begins: 10:00 AM)
July 15	County Shoot (Time to be determined)

FAIR CAMPING NEWS

Camping registration will be mailed February 24th. Registration deadline is March 29th. If you are interested in changing sites from last year, your payment must be made by March 29th. Change day is Friday March 31st. Deb will be in the fair office from 9 a.m. – 11 a.m. or you may call to see what is available.

New camper sign up is April 1, 2023 at the Fair Office from 9 a.m. – 11 a.m. You may also call the fair office for reservations at 989-773-9070 with your credit card. Remember we will be waiting on those in line first.

If you have any questions, call Deb Acker at 989-400-1082.

4-H Exploration Days

June 21-23 at Michigan State University

4-H Exploration Days is an annual state youth conference that is open to all youth ages 12-19, by January 1. This event is meant to be a learning experience that will instill self-esteem, decision-making skills, independent thinking and leadership skills. The full time participant fee is \$220 which includes meals, lodging, and a t-shirt. 4-H Council will pay half the fee for full time registration.

Registration begins on March 21 at 7 p.m. and sessions fill up VERY fast, so register as soon as possible. A \$50 deposit is due when you register.

For more information, visit: https://www.canr.msu.edu/4_h_exploration_days/index

Seeking Teen 4-H Council Representatives

What is the Isabella County 4-H Council?

The 4-H Council is the main decision-making body for the county 4-H program. It is responsible for working with the paid staff to support county 4-H program planning, administration and policy making. The Council is charged with keeping track of "the big picture" for our county 4-H program. It assists with volunteer recruitment, 4-H awareness building, and it oversees things such as member and volunteer recognition and the county award program. Monthly meetings (the 4th Tuesday of the month) are held at the Isabella County Building in room 320, and are open to all 4-H leaders and interested people.

Link to Teen Representative application:

http://www.canr.msu.edu/isabella/isabella_county_4_h/newsletters-and-forms

SCHOLARSHIP OPPORTUNITIES

Isabella County 4-H Scholarship

Isabella County offers two \$500 scholarships to 4-H members or former members each year. The scholarship recipient must be enrolled at an institution of higher learning and have been involved with 4-H in Isabella County. The scholarship is not limited to college freshmen.

To get an application, click here: [Isabella County 4-H Scholarship](#) or you may pick one up at the Extension office. Applications are due back to the office by April 20. The scholarship recipients will be notified by May 15.

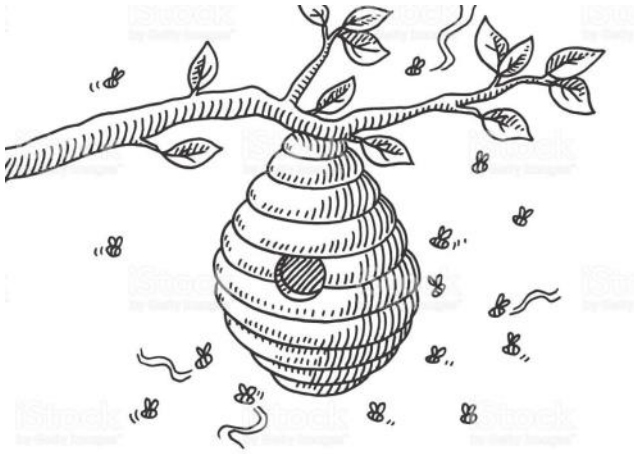
Kathryn Methner Fike Scholarship

For high school seniors and current college students. Thank you to the family of Kathryn Virginia Methner Fike for establishing a \$1000 scholarship in her name to benefit 4-H members in Isabella County.

Kathryn Virginia Methner Fike was born on the farm of her parents in northeast Wise Township, Isabella County on Nov 21, 1918. Except for a few winters in Florida, she spent all most 96 years within 5 miles of her birthplace. She married Lester Fike on March 29, 1936 and spent over 60 years on what became the Fike Centennial Homestead. In her childhood years, she was a member of a 4-H sewing club lead by her mother, Daisy Methner. After having children of her own, she became a leader, too. She served in this capacity for many years. Kathryn took great pride in the accomplishments of her children, grandchildren, and great grandchildren in their 4-H activities.

4-H has been a top priority in Kathryn's family for 5 generations and so it is with pride that her family is honoring Kathryn's many years of dedication to 4-H education in Isabella County with this scholarship.

Application is available at: https://www.canr.msu.edu/isabella/isabella_county_4_h/newsletters-and-forms



BEElievers 4-H Club

(bee keeping)

If you are already in a 4-H Club, this can be your secondary club.

Want to find out what the buzz about bees is all about? This club is designed to teach about the ancient art of beekeeping. Begin learning about the importance of bees and travel through the world of bee development and behavior!

DATE

**Thursday, March 30 from
6:00 PM - 8:00 PM**

LOCATION

Isabella County Building
(200 N. Main Street, Mt. Pleasant MI, 48858)

3rd floor ○ Room 320

WHO

For youth ages 8 - 19



**For more information about the club, please contact Karl Geiger at
karlcgeiger@yahoo.com or (989) 506-2745.**



**MICHIGAN STATE
UNIVERSITY**



Extension



MSU is an affirmative-action, equal-opportunity employer. Michigan State University Extension programs and materials are open to all without regard to race, color, national origin, gender, gender identity, religion, age, height, weight, disability, political beliefs, sexual orientation, marital status, family status or veteran status. Accommodations for persons with disabilities may be requested by contacting the MSU Extension office at (989) 317-4079 at least 5 days prior to the scheduled event to ensure sufficient time to make arrangements. Requests received after this time will be met when possible.



STATEWIDE CALENDAR OF EVENTS

Win prizes with 4-H Money Contests



Money, money, money! In honor of Financial Awareness Month held each April, MSU Extension is coordinating two contests with an opportunity to win... money!

Youth ages 9-12 can write a short essay of 300 words or less for a chance to win a \$100 gift card in the Cash Composition Contest.

Youth ages 13-19 can participate in a 30-question online challenge for a chance to win a \$25 gift card in the Show Your Money Smarts Contest.

Learn more at www.canr.msu.edu/4-h-money-smarts. Prizes for the contests are generously sponsored by Extra Credit Union and the Michigan Credit Union Foundation.



March 2: Build Your Future - Career Education for Youth

Online

Adults who work with youth are encouraged to join this webinar session to learn ways to implement career education and workforce development skills with youth!

<https://www.canr.msu.edu/events/build-your-future-mar-2>

March 10: 4-H Teen Fun Night

The Northern Center & Fox Den Restaurant, Houghton Lake

Teens from Roscommon and surrounding counties are invited for a night of video games, basketball, board games, cards, food, fun and making friends.

<https://www.canr.msu.edu/events/4-h-teen-fun-night-march-2023>

March 11-12: Tollgate Farm Maplefest

Tollgate Farm, Novi

Identify and tap a maple tree, tour the sugar shack, explore fun maple-themed activities, take a wagon ride, taste maple sap, syrup and sugar, and explore maple tools and technology. Enjoy pancakes, sausage, coffee, cocoa and real maple syrup in the historic 19th-century barn.

<https://www.canr.msu.edu/events/msu-tollgate-farm-maplefest>

March 14: Wild Spartans Series - Upland Bird Conservation

Online

Meet Pheasants Forever and Quail Forever Education and Outreach Manager Marissa Jensen. Learn about her field work and the education and career path she followed to get there.

<https://www.canr.msu.edu/events/wild-spartans-series-march-2023>

March 16: Adulting 101 – Paycheck and Taxes

Online

Understanding why and how taxes and other items are deducted from a worker's paycheck is an important step toward gaining financial knowledge. Explore what taxes are and why we pay them. See how taxes affect your salary vs. your take home pay.

<https://www.canr.msu.edu/events/adulting3-16-23>

March 18: 4-H Hippology Contest

Anthony Hall, East Lansing

Participants will be able to demonstrate their experience and knowledge gained in horse judging, quiz bowl, speeches and practical horse management. Register by March 3.

<https://www.canr.msu.edu/events/mi-4-h-hippology-contest>





STATEWIDE 4-H NEWS

Apply for the Michigan 4-H State Awards!

Michigan 4-H true leaders ages 11 and older have an opportunity to be recognized for the great work they do in 4-H and develop their career skills by completing a state award application. A Michigan 4-H State Award is the highest honor bestowed on a Michigan 4-H member and provides an opportunity to receive recognition for their engagement in rich learning experiences that result in outstanding knowledge and life-skill development.

State award applications are divided into four categories: Mark of Excellence essay contest (11-12 years old), junior state award (13-15 years old), senior state award (16-19 years old) and group awards (13-19 years old). The application process and selection is determined by the age of the 4-H member.

More information about the Michigan 4-H State Award process can be found online at <http://bit.ly/stateaward>. Applications are due April 1. For more information, contact your 4-H program coordinator or email Betty Jo Krosnicki at nashbett@msu.edu or Janice Zerbe at rajzerj@msu.edu.



MICHIGAN 4-H VOLUNTEER WEBINAR SERIES

February 28th
Building the Value of
Your 4-H Club

March 16th
Creating a
Welcoming 4-H Club

April 13th
Energizing Your 4-H
Club Meetings

ALL TRAININGS
OFFERED 12-1PM EST
AND 7-8PM EST



REGISTER HERE:
[www.canr.msu.edu/volunteering/
mi-4-h-volunteer-webinar-
series](http://www.canr.msu.edu/volunteering/mi-4-h-volunteer-webinar-series)

Register for Michigan 4-H Volunteer Webinar Series!

Join Michigan 4-H for an online webinar series that will provide volunteers with a variety of learning opportunities to help them grow as a volunteer and support Michigan 4-H'ers.

There will be a minimum of six topics offered throughout the year, with each topic offered twice (once as a daytime and once as an evening option). Everyone who attends at least four of the live webinars will receive a certificate at the end of the series.

The session dates and topics for the first three months are:

- **Building the Value of Your 4-H Club:** This session will focus on the key components of creating a club environment and how that leads to positive outcomes.
 - February 28, from 12:00 - 1:00 p.m. or 7:00 - 8:00 p.m.
- **Creating a Welcoming 4-H Club:** This session will allow you to learn new strategies as well as share methods that have worked for you.
 - March 16, from 12:00 - 1:00 p.m. or 7:00 - 8:00 p.m.
- **Energizing Your 4-H Club Meetings:** Learn quick and engaging activities to make your next meeting both fun and functional. Have fun and learn ways to help everyone participate at their own comfort level.
 - April 13, from 12:00 - 1:00 p.m. or 7:00 - 8:00 p.m.

For registration links or more information, visit <https://www.canr.msu.edu/volunteering/mi-4-h-volunteer-webinar-series>



2023 ROYAL AMBASSADOR PROGRAM

Would you like to run for Isabella Co. Royal Ambassador Program?

We are starting up the new year with a Royal Ambassador Program where 4-H participants can have the opportunity to grow as leaders and be a representative for Isabella County Fair. This opportunity opens up life skills such as interviews, public speaking, essays, job shadowing, planning, and more. This program is open to all 4-H participants ages 8-19. Winning royal ambassadors will receive a scholarship. Service on the team, also looks good on a Resume!

If you are interested in running in the Royal Ambassador program, we will have packets at the 4-H Extension Office or you can print a packet from the Isabella County 4-H website. Packets will be available starting February 1st, 2023. The packets will be due May 1st, 2023 by 4 PM to the 4-H Extension office. The packet has lots of information that you will need, but if you have any further questions we have our contact information on the bottom or in the packet.

If you would like to learn more about our program, we will be holding a meeting on February 9th, 2023 at the Isabella county building in room 320. Meeting will start at 7pm. We will discuss the purpose of the program, packet information, benefits of the program, our rules, and expectations, and what to expect for the program year. We will also help answer any questions or concerns that you may have about the program. Definitely recommend coming so that way we can give you tips and help you in any way possible.

Want to make a special note to young gentlemen that this program would be a great opportunity to get involved. Instead of a crown they will be receiving a cowboy hat.

Questions or Concerns- Please Contact

Lillian Albaugh at (989) 513-8202 & Email/ lillianalbaugh@gmail.com

Kourtney Collin at (989)444-2097 & Email/ kcollin10@gmail.com





REQUIRMENTS FOR



ROYAL AMBASSADOR PROGRAM

[JUNIOR & SENIOR]

Participants must be 4-H age 8-19 and must have completed a minimum of 1 year in Isabella County 4-H (Including cloverbud years)

SENIOR

Running for Senior Royal Ambassador

- 4-H Age 15-19
- Complete the Senior Royal Ambassador packet with a 4-H leaders reflection (That is in the packet)
- Cover letter and Resume
- Interview and your Visual Aid

JUNIOR

Running For JuniorRoyal Ambassador

- 4-H Age 8-14
- Complete the Junior Royal Ambassador Packet with a 4-H leaders reflection (That is in the packet)
- 1-2 Page Essay
- Interview and your Visual Aid





JOIN THE TEAM CAMP CLOVER

BE AN ADULT CHAPERONE

4-H is looking for volunteers who are interested in helping with Camp Clover this summer!

If you would like to apply to become a Camp Chaperone, applications are due **Friday, March 31st.**

RECEIVE FREE REGISTRATION FOR ONE CHILD

Isabella, Gladwin and Clare 4-H Programs are teaming up to bring back Camp Clover! It will be a fun filled overnight camp from June 20th – 22nd.

Located at *Camp Neyati in Lake, MI.*

Chaperons arrive the afternoon of Monday June 19th for Camp Clover Orientation.

Must be 4-H Volunteer ☒

Free admission for one camper ☒

Help lead sessions & supervise ☒

Attend at no cost ☒



Questions? Call MSU Extension
(989) 539 - 7805



Miranda Warmuskerken
warmusk3@msu.edu



SCAN QR

ONLINE APPLICATION

Scan code to take you directly to the online counselor application.

APPLICATION DUE BY



FRIDAY
31, MARCH 2023

BECOME A 4-H VOLUNTEER



SCAN QR

ONLINE APPLICATION

Scan code to take you directly to the online volunteer application.



Isabella County 4-H

Proud Equestrian Program

The 4-H Proud Equestrian Program (PEP) is a therapeutic horseback riding program that is offered through MSU Extension for individuals with any form of a disability (ex. emotional, cognitive, physical, etc.). With the help of trained and caring volunteers, riders can improve balance, coordination, posture and muscle tone. Horseback riding has been shown to increase self-esteem, self-confidence, discipline and social growth.

Most of all, horseback riding is fun!!

Our 2023 riding dates are 6/13, 6/20, 6/27, 7/11, 7/18, and 7/29 starting at 6pm in Mount Pleasant.

Isabella County 4-H PEP program is seeking horses for the upcoming year. We are also seeking horse handler/leader and side walker volunteers! If you have a horse you feel will make a great addition to the program or you personally are interested in being a volunteer, please email the PEP Instructor Mallory Wilson at

Mallory.wilson20@gmail.com





Puppy Raisers are Needed!

4-H and Leader Dogs for the Blind need YOU to make a DIFFERENCE!

"Your family temporarily adopts a program puppy for eleven months until they are old enough to head off to school!"

New Launch and Rollout at our Informational Meeting

**MARCH 9, 2023, AT 6:30
WILL ALSO BE HELD VIRTUALLY
FROM THE LEADER DOG CAMPUS**



APPRECIATING INDEPENDENCE

The mission of Leader Dogs for the Blind is to Empower people who are blind or visually impaired with lifelong skills for safe and independent daily travel.

CONTACT INFO:

- 1039 S. Rochester Road
- Rochester Hills, MI 48307
- 888-777-5332
- leaderdog@leaderdog.org
- LeaderDog.org
- Kristi Schreiber
- 4-H P.C Isabella Co.
- 4-H State Companion
- Animal Point of Contact
- schrei61@msu.edu
- 989-330-5131



Register at:

<https://events.anr.msu.edu/LeaderDogFeb23/>

Isabella County
200 N. Main Street
Mt. Pleasant, MI 48858

Phone: (989) 317-4079
Fax: (989) 773-1622

Website:

<https://www.canr.msu.edu/isabella/>



<https://www.facebook.com/IsabellaCounty4H/>

4-H Calendars Now Available

4-H calendars are now available at the Extension office. Stop by and get one!

SAVE THE DATES

Dairy Feeder Weigh-in
March 18

Shooting Sports Kickoff Event
April 15

Camp Clean-Up
April 23

Camp Clean-Up
May 6

Goat Weigh-in
May 13

4-H Exploration Days at MSU
June 21 - 23

4-H Cloverbud Camp
July 18 & 19

Isabella County Youth & Farm Fair
July 22 - 29

Isabella County 4-H Calendar

March 7	Teen Horse Leaders @ MSUE	6:00 PM
7	Horse Leaders @ MSUE	6:30 PM
14	PEP Open House @ MSUE	6 PM
15	Small Animal Association @ First Church of Christ, Mt. Pleasant	7 PM
15	Shooting Sports Committee @ MSUE	7 PM
18	Dairy Feeder Weigh-in @ Fairgrounds	7:30 AM - 11:30 AM
28	4-H Council @ MSUE	7 PM

MSU is an affirmative-action, equal-opportunity employer. Michigan State University Extension programs and materials are open to all without regard to race, color, national origin, gender, gender identity, religion, age, height, weight, disability, political beliefs, sexual orientation, marital status, family status or veteran status. Issued in furtherance of MSU Extension work, acts of May 8 and June 30, 1914, in cooperation with the U.S. Department of Agriculture. Quentin Tyler, Director, MSU Extension, East Lansing, MI 48824. This information is for educational purposes only. Reference to commercial products or trade names does not imply endorsement by MSU Extension or bias against those not mentioned.

"Accommodations for persons with disabilities may be requested by contacting the MSU Extension office at (989) 317-4079 at least 7 days prior to the scheduled event to ensure sufficient time to make arrangements. Requests received after this time will be met when possible."

Kristi Schreiber, 4-H Program Coordinator
schrei61@msu.edu

Nonie Gross, Secretary
Monica Jean, Field Crops Educator
Eric Karbowski, District 6 Director
Kara Lynch, Food Safety Educator
Sabrina McGee, SNAP-ED PI